

EWL GROUP  
PRESENT



# PRESS CONFERENCE INVITATION

The *Impact of Ukrainian Citizens* on the Dutch  
Economic Growth and Workforce



## ***Invitation to the Presentation of Study Findings:***

*Unlocking the Potential of Ukrainian  
Citizens in Germany and the  
Netherlands*



**TUESDAY  
18 June, 2024**



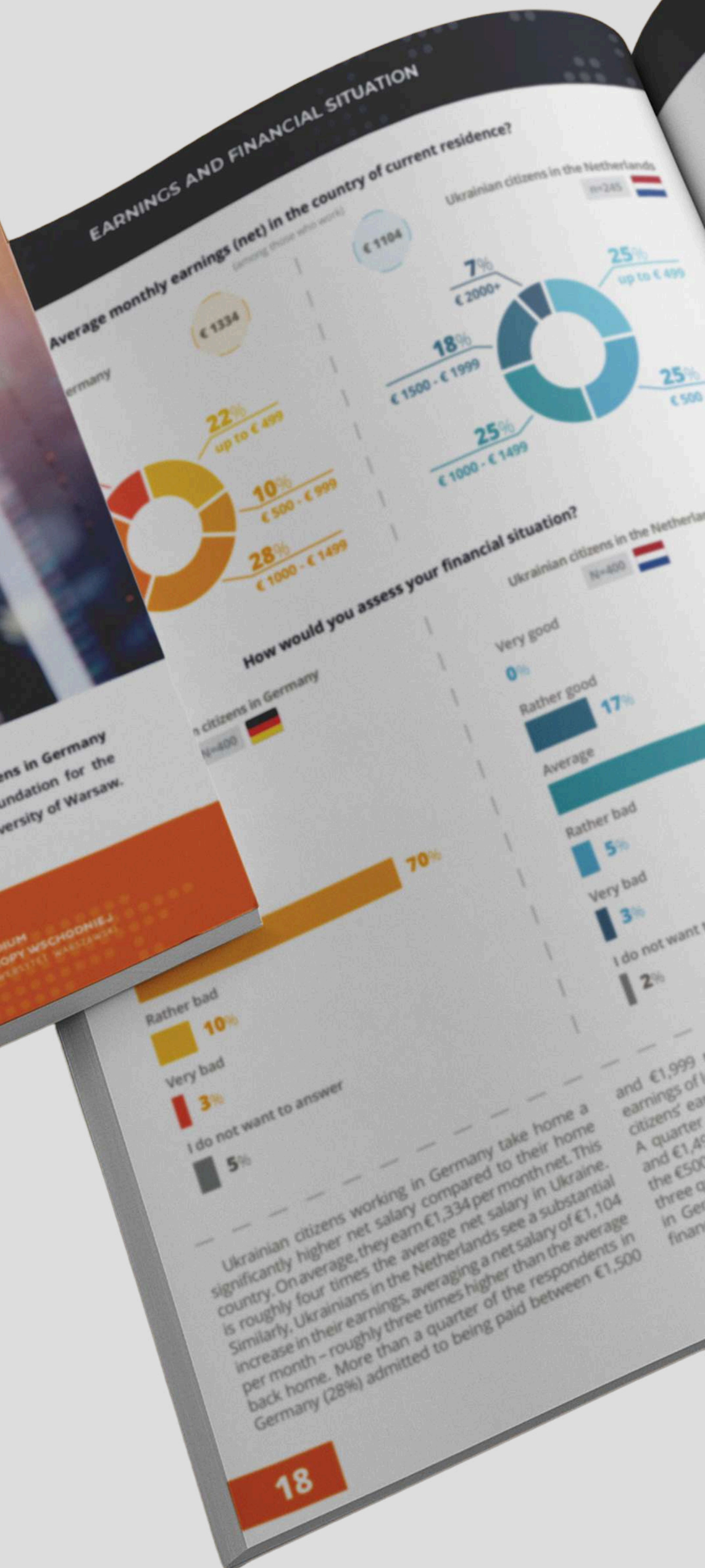
**09:30AM – 12:00AM**



**Persentrum Nieuwspoor  
Bezuidenhoutseweg 67  
2594AC The Hague, NL**

FOR ADDITIONAL DETAILS, PLEASE REFER TO THE OTHER PAGES.





## *The Impact of **Ukrainian** Citizens on the **Dutch** Economic Growth and Workforce*

The EWL Group, one of Poland's **largest employment agencies**, in collaboration with the University of Warsaw, has embarked on extensive research into the economic migration of refugees from Ukraine to EU countries.

Over the past six years, they've conducted over a dozen surveys across multiple countries. The results of these surveys have been compiled into 19 reports published in five languages and presented in various countries. Their research is highly regarded and frequently cited by both Polish and Ukrainian media, as well as international organizations.

Recently, a survey titled “**Unlocking the Potential of Ukrainian Citizens in Germany and the Netherlands: The Socioeconomic Situation and Vocational Activation**” was conducted between March 18 and March 30, 2024, by the EWL Group and the Centre for East European Studies at the University of Warsaw.

This study involved a total of 800 adult Ukrainian citizens currently residing in Germany and the Netherlands, encompassing both labor migrants and war refugees.

**We are pleased to extend an exclusive invitation to you for a press conference where we will present our latest sociological study focusing on Ukrainian citizens currently residing in the Netherlands.**

**Join us as we discuss the importance of the findings of this research.**



# AGENDA



All speakers are available to journalists for individual interviews.



Note: Please check the location access and parking on page 4



The press conference will be held in English.



RSVP: Please confirm your attendance by sending an email to [contact@prgoeroes.nl](mailto:contact@prgoeroes.nl) and make sure to register in advance by following the instructions on page 5

09:30 – 10:00: Walk-In and Registration

10:00 – 10:10: Opening Remarks with H el ene van Melle/Tent Partnership for Refugees

10:10 – 10:50: Presentations by EWL Group and Guest Speakers

10:50 – 11:10: Q&A section

11:10 – 12:00: Networking with Complimentary Coffee, Tea, and Snacks



[www.prgoeroes.nl](http://www.prgoeroes.nl)



+31(0) 6 5141 5790

# IMPORTANT INFORMATION FOR YOUR VISIT TO NIEUWSPOORT

**Please note: Nieuwspoord is located in the Kamergebouw, where some security measures apply.**

To ensure a smooth visit, please prepare as described below.



## HOW TO ACCESS THE KAMERGEBOUW:

- **Arrive on time** due to security measures.
- **Bring a valid ID** with you.
- Do you have a Rijkspas? Or are you a Poorter (member of Nieuwspoord)?
- If so, you can enter directly through the designated gates.
- In all other cases, follow the preparation steps below

## PREPARATIONS:

### Step 1: Registration

- Go to [bezoekers.nieuwspoord.nl](https://bezoekers.nieuwspoord.nl) and enter your details.
- You will receive a QR code in your email for access to the Tweede Kamer building. You can also register on-site.

### Step 2: Security

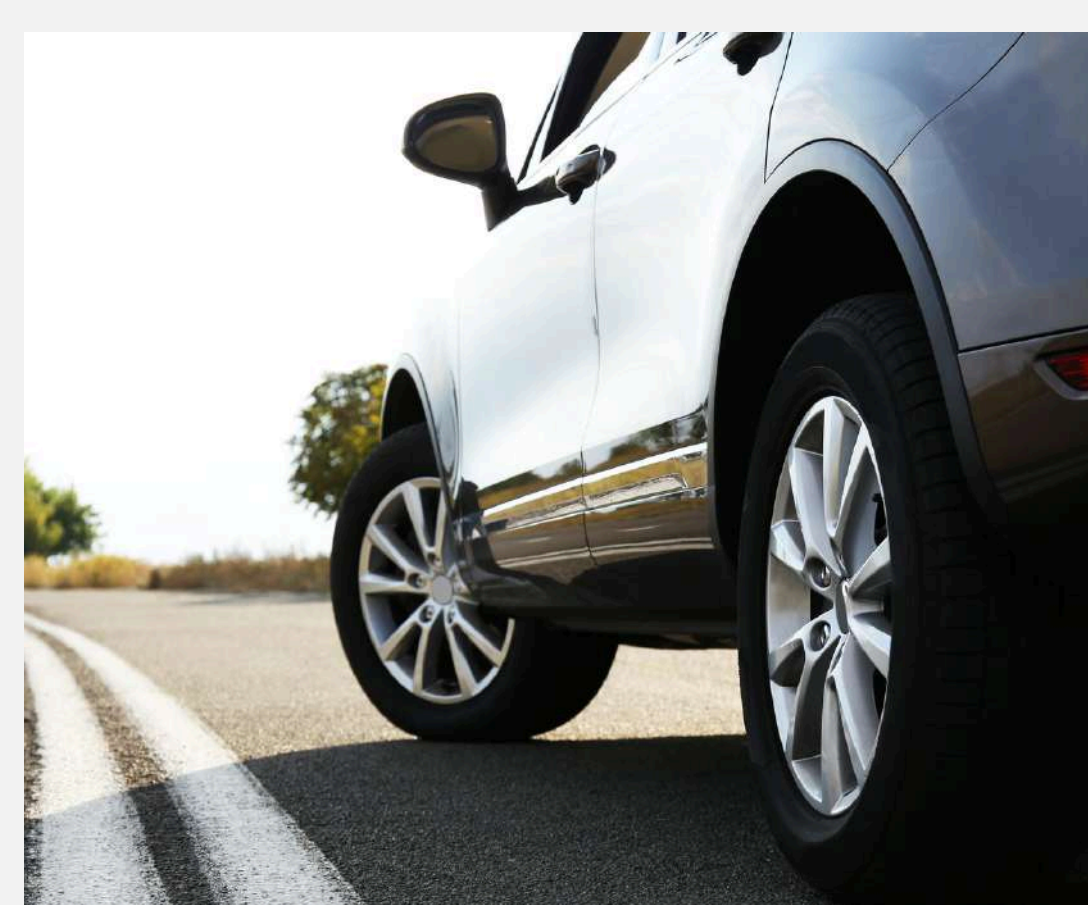
- Report to security and have your QR code scanned using your phone or a printed version. Keep your ID handy.

### Step 3: Security Check

- At the security check, follow the instructions of the security personnel.
- Note that items such as laptops, belts, and jewelry often need to be scanned separately.

### Step 4: Welcome!

- You can now proceed directly to Nieuwspoord.



## BY CAR

The Tweede Kamer building is located next to the A12 (exit 2 towards Centraal Station/Centrum-Zuid) and the S100 (exit towards Centraal Station), making it easily accessible by car. The Tweede Kamer does not have public parking. You can park at Q-Park CS New Babylon or Q-Park Malieveld.



## BY PUBLIC TRANSPORT

Nieuwspoord is also easily accessible by public transport. It is within walking distance from Den Haag CS (exit Annavan Buerenplein).



## BY BICYCLE

Please note: due to security measures, bicycles must be parked at a distance from the Kamergebouw. This can be done, for example, at the bicycle parking strip along Bezuidenhoutseweg opposite Coolblue (Babylon) or in the bicycle parking of Den Haag CS.

# SPEAKERS

**Alex Kartsel,**  
**VP User Services, EWL Group**



Vice president of the board of one of the fastest-growing employment companies in the EU - EWL Group, which effectively connects candidates from five continents (Europe, Asia, Africa, North America and South America) with European employers. Since its establishment in 2007, the company has helped over 170,000 people from 28 countries find employment with over 1,600 employers in European Union countries.

For over 15 years, Alex has held management roles (CEO, GM) in both startups and corporations (OLX, Bolt, SAP). He successfully implemented innovative services and products on the Polish market (Bolt, Xpress.delivery, 321sprzedane.pl and others). During his professional career, he spent several years working in other countries (including Russia, Germany, Spain, Egypt).

Alex was a mentor in programs and projects implemented by Boston Consulting Group (BCG), Polish Development Fund (PFR), LeadersIn and others. He holds an MBA (European University Viadrina) and a PhD in social sciences in the field of political science (University of Warsaw).

**Hélène van Melle**  
**Deputy Director for Europe at the Tent Partnership for Refugees**



Hélène is the Deputy Director for Europe at the Tent Partnership for Refugees, where she leads efforts to integrate refugees into the workforce across Europe. Based in the Netherlands, she is dedicated to making a meaningful impact on the lives of refugees.

Before joining Tent, Hélène had an impressive twenty-year career at Accenture in Consulting and Global HR roles. She was a driving force behind the creation of the Refugee Talent Hub in the Netherlands, a pioneering initiative that connects companies with refugee talent, significantly improving job opportunities for refugees.

Hélène holds a Master's degree in Business Economics, which enhances her strategic thinking and economic analysis skills. Her leadership and innovative vision continue to create significant opportunities for refugees throughout Europe.



# SPEAKERS

## Boy Hultink

### Business Development Manager, EWL Group



As a dedicated and results-driven recruitment professional, he excels at matching top talent with the right opportunities. Specializing in diverse and challenging job markets, including technology, aviation, healthcare, hospitality, and agriculture, he is passionate about finding the perfect candidates for the right positions.

He holds a Bachelor's degree in Business Sciences with a focus on recruitment, marketing, and psychology, complemented by multiple certifications and extensive sector experience. His flexibility and vast network allow him to identify talent quickly and efficiently. Additionally, he prioritizes building strong relationships with his clients, making him a valuable asset to any company seeking top talent.

## Mariusz Kowalski

### Professor, University of Warsaw



Professor at the Institute of Geography and Spatial Organization at the Polish Academy of Sciences, lecturer at the Center for East European Studies at the University of Warsaw, member of the Council for Poles Abroad and the Polish-Lithuanian Textbook Commission. Between 1993–1995 he was an official of the local government of the capital city of Warsaw. Since 1995, he has been working academically in the field of anthropogeography (political and historical geography, population geography).

In 2001, he obtained his doctorate, and in 2014 – habilitation in earth sciences in the field of geography. His research interests include: electoral issues, demography, historical and contemporary territorial divisions, the evolution of political and socio-economic systems, geozophy and genealogy.

He has participated in and led numerous national and international research projects. Author of over a hundred scientific publications as well as numerous encyclopedic, popular science and journalistic articles historical and contemporary territorial divisions, the evolution of political and socio-economic systems, geozophy and genealogy.



# SPEAKERS



**Margarita Nesterenko**  
**Service Delivery Director, EWL Group**

At the age of 17, Margarita moved from Ukraine to Poland and since then has been a part of the global migration community.

As the Service Delivery Director at EWL Group, she ensures that employees from Ukraine, the EU, Asia, and Latin America can find decent work outside their home countries and rebuild their lives from scratch.

Margarita actively participates in conducting sociological research on the economic and social situation of migrants in the EU to enhance the vocational activation of immigrants in countries with the highest labor shortages. She holds a master's degree with a specialization in human resource management.







# WE LOOK FORWARD TO YOUR PRESENCE!

 [www.prgoeroes.nl](http://www.prgoeroes.nl)

 +31(0) 6 5141 5790

 **RSVP: Please confirm your attendance by sending an email to [contact@prgoeroes.nl](mailto:contact@prgoeroes.nl) and make sure to register in advance by following the instructions on page 5**

*For more information about EWL GROUP and research, please visit: [www.ewl.com.pl/en/](http://www.ewl.com.pl/en/)*